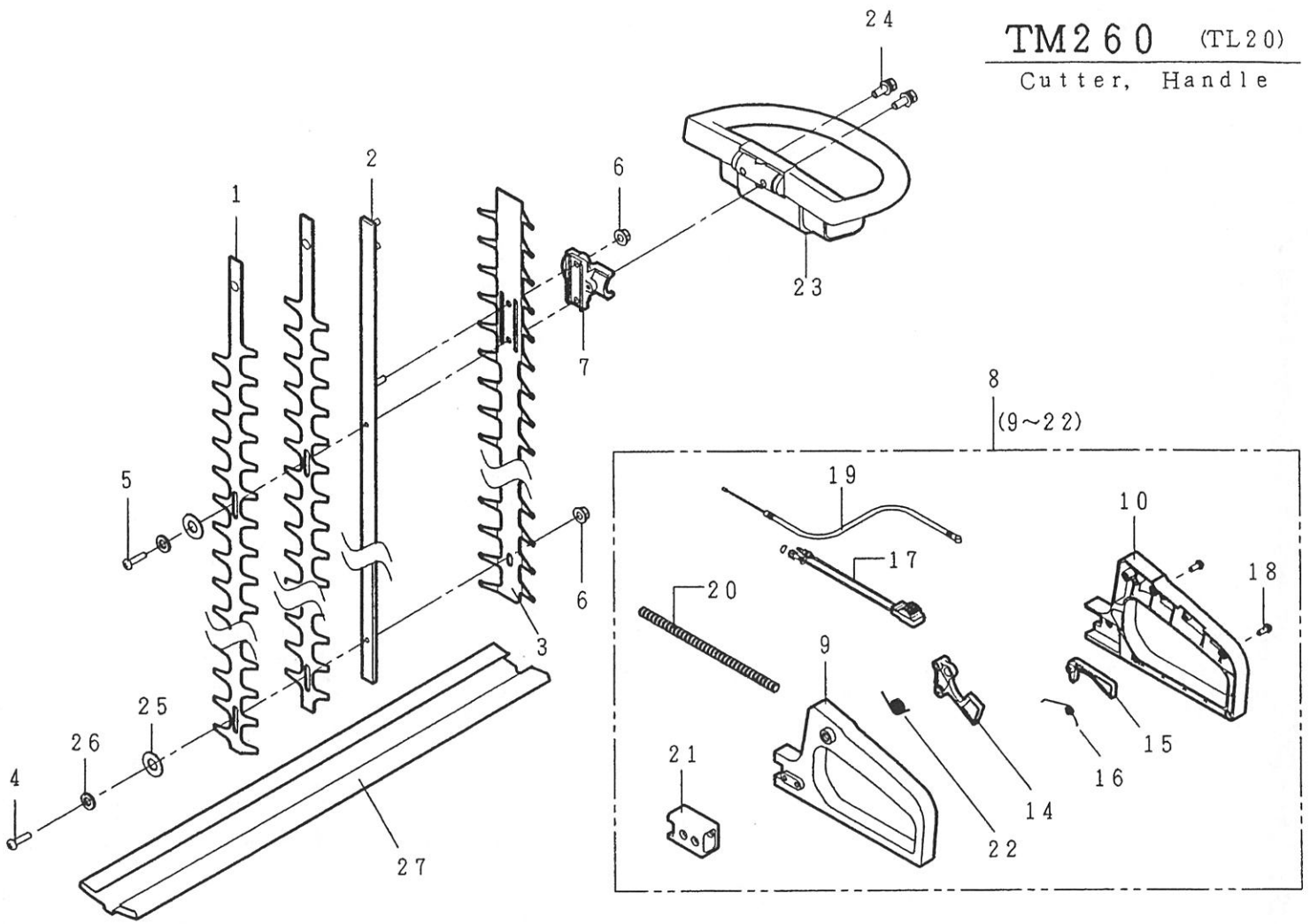


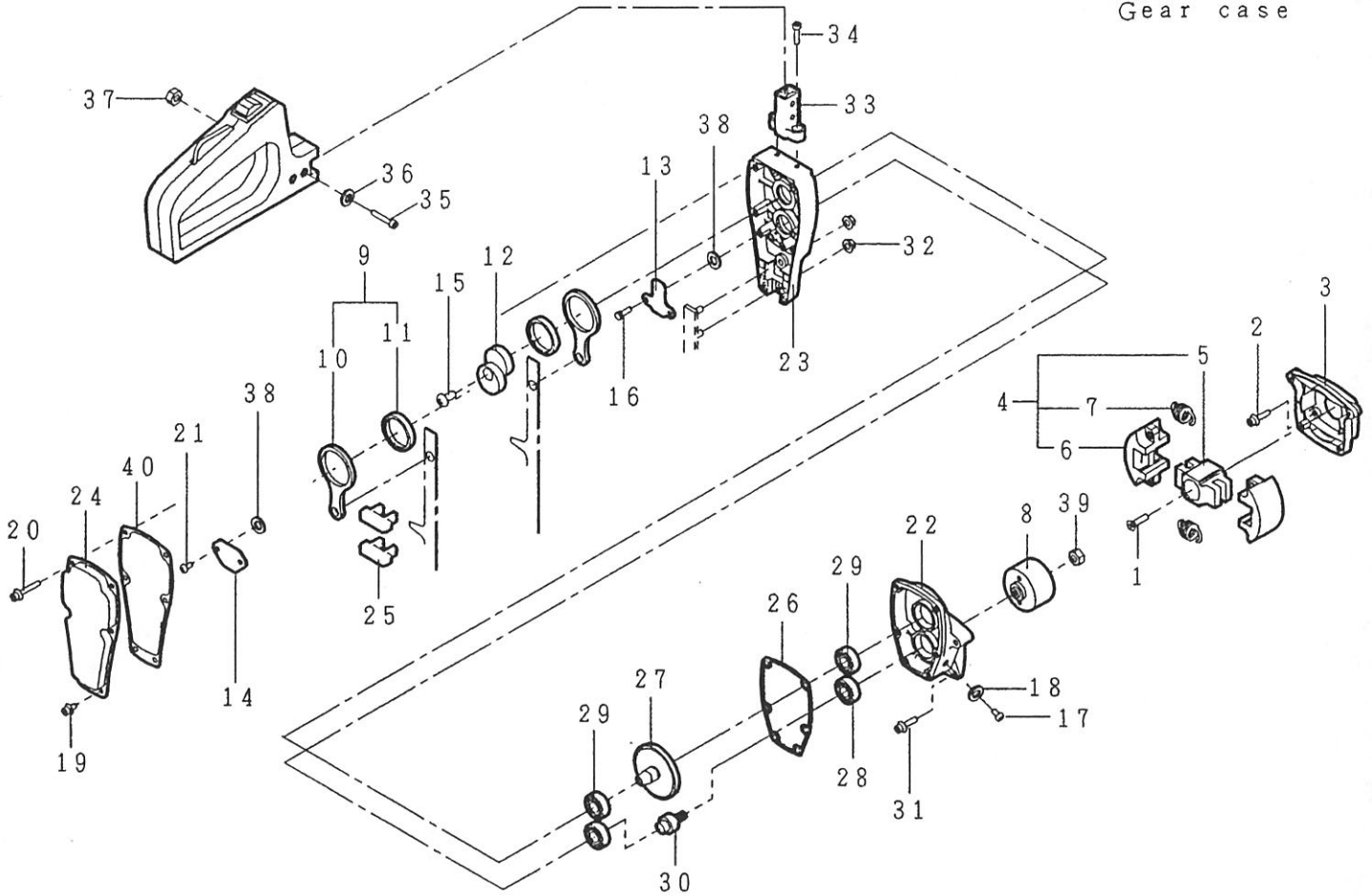
TM260 (TL20)

Cutter, Handle



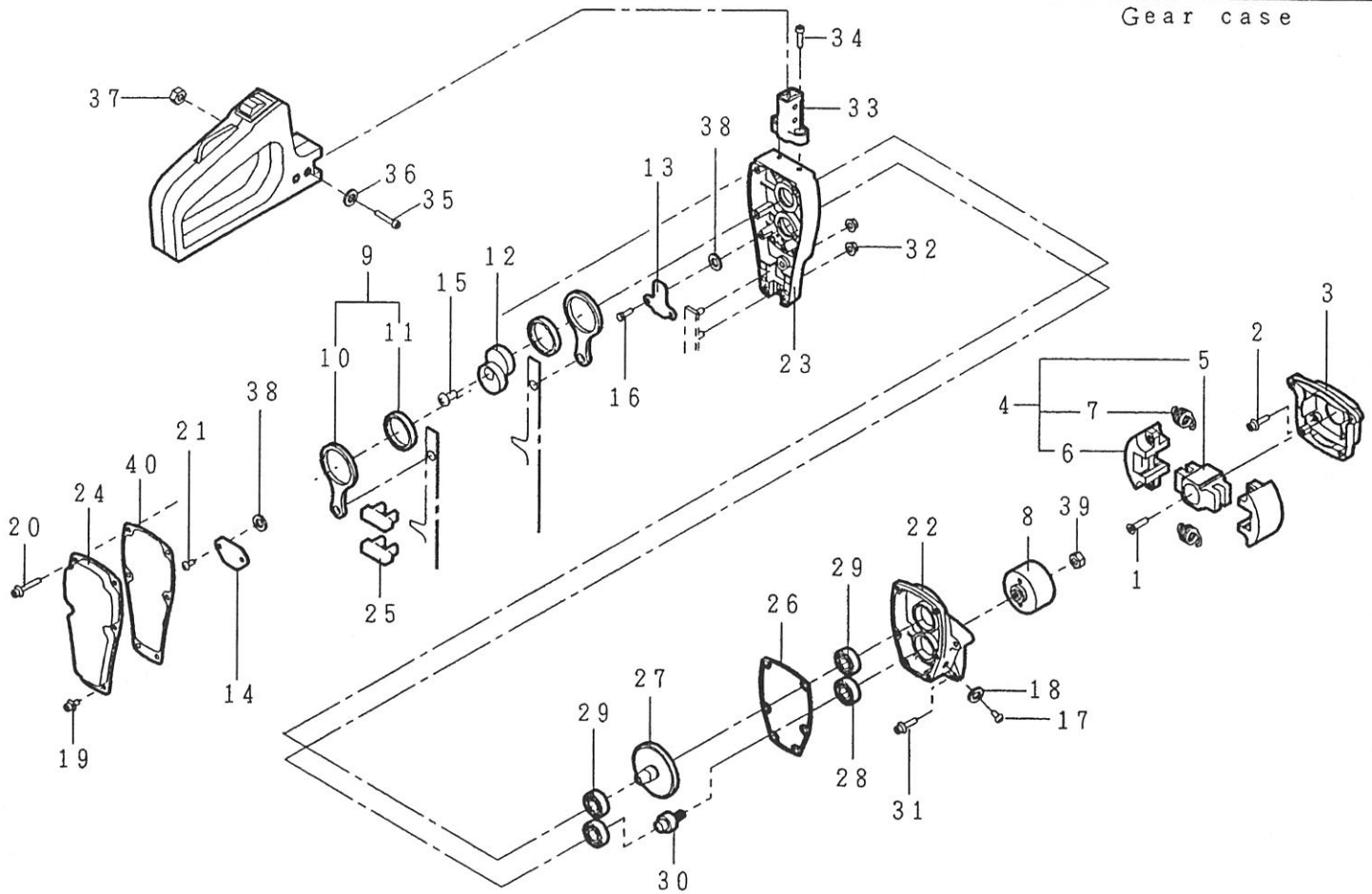
46013-715

REF. NO.	PARTS NO.	PARTS NAME	Q' TY INCLUDING	Jul. 1999	RECOMM. (%)	REMARKS
				3 / 3		
1	91053 118	CUTTER(A)	2		15	
2	11051 122	CUTTER GUIDE	1		10	
3	51090 114	PROTECTOR	1		3	
4	31029 110	STEP BOLT(S)	3		6	
5	31030 104	STEP BOLT(L)	1		6	
6	584L 0600	U-HEXAGON NUT M6	5		4	
7	51116 123 09	HANDLE BRACKET	1		3	
8	71014 354	HANDLE ASS'Y	1		-	
9	51106 126	HANDLE(R)	1		3	
10	51106 110	HANDLE(R)	1		3	
14	91010 129	THROTTLE LEVER	1		5	
15	36081 101	LOCK LEVER	1		5	
16	68013 140	SPRING	1		3	
17	41004 145	STOP SWITCH	1		3	
18	464L 0416	(+)TAPPING SCREW M4x16	5		3	
19	91001 242	THROTTLE WIRE	1		3	
20	41003 145	TUBE	1		4	
21	36006 116	ABSORBER	1		8	
22	68013 313	SPRING	1		3	
23	51105 119	HANDLE(L)	1		3	
24	334L 0535	(+)HEXAGON BOLT(W/SW, PW) M5x35	2		3	
25	68002 101	CUTTER WASHER	4		6	
26	670V 0700	CONICAL SPRING WASHER	4		3	
27	36065 334	COVER	1		3	



46013-715

REF. NO.	PARTS NO.	PARTS NAME	Q' TY	Jul. 1999		REMARKS
				RECOMM. (%)	1 / 3	
1	461L 0620	(+)FLAT SCREW	1			3
2	423U 0516	SOCKET SCREW FLANGE M5x16	4			3
3	51070 125	ENGINE BASE	1			3
4	71019 114	CLUTCH SHOE ASS'Y	1			-
5	11055 105	CLUTCH HUB	1			6
6	68025 111	CLUTCH SHOE	2			15
7	68014 112	CLUTCH SHOE SPRING	2			6
8	11014 189	CLUTCH DRUM C.P.	1			5
9	11046 101	CAM ROD C.P.	2			5
10	11048 101	CAM ROD	1			-
11	76004 101	CAM ROLLER	1			-
12	11047 102	CAM	1			5
13	11049 101	SLIDE PLATE	1			1
14	11050 101	FIXING PLATE	1			1
15	31028 102	CAM PUSH SCREW	1			5
16	318L 0530	(+)HEXAGON BOLT(W/SW) M5x30	2			3
17	371L 0610	(+)SCREW M6x10	1			3
18	611L 0600	PLAIN WASHER M6	1			10
19	423U 0510	SOCKET SCREW FLANGE M5x10	2			3
20	423U 0540	SOCKET SCREW FLANGE M5x40	4			3
21	461L 0510	(+)FLAT SCREW M5x10	2			3
22	51001 234	GEAR CASE	1			1
23	51068 105	CAM CASE	1			1
24	51069 103	CAM CASE COVER	1			1
25	61010 109	FELT PACKING	2			5



46013-715

REF. NO.	PARTS NO.	PARTS NAME	Q'TY INCLUDING	Jul. 1999	REMARKS
				RECOMM. (%)	2 / 3
26	61019 : 130	PACKING	1	10	
27	78004 : 173	GEAR	1	5	
28	916B : 6001	BEARING	1	4	6001DDC3
29	917B : 6001	BEARING	3	4	6001ZZC3
30	78003 : 125	PINION	1	5	
31	423U : 0520	SOCKET SCREW FLANGE	4	3	M5x20
32	579L : 0600	FLANGE NUT	2	3	M6
33	51116 : 137	HANDLE BRACKET	1	8	
34	413U : 0520	SOCKET SCREW(W/SW)	2	3	M5x20
35	412U : 0540	SOCKET SCREW	2	3	M5x40
36	666U : 0500	CONICAL SPRING WASHER	2	3	M5
37	512U : 0500	HEXAGON NUT	2	3	M5
38	68036 : 230	WASHER	4	3	
39	31058 : 154	NUT	1	3	
40	61019 : 213	PACKING	1	10	